

CERTIFICATE OF LOCATION OF GOVERNMENT CORNER

NORTHWEST Corner of Section 06, Township 107N, Range 43W

5th Principal Meridian, State of Minnesota, County of Murray

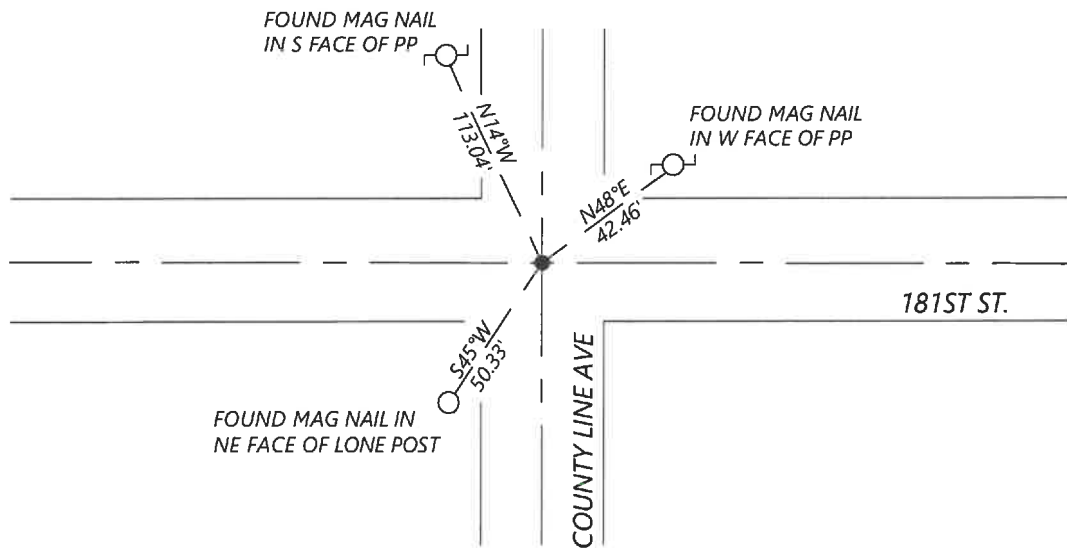
At the corner location shown on the sketch:

☒ On 11/11/2022 found a 3/8" rebar with illegible cap 0.2' deep and 2 ties of previous records plus one tie of
DATE unknown origin.

☒ left monument as found ☐ lowered monument ☐ removed monument (explain)

☐ On _____ placed a _____
DATE

SKETCH OF REFERENCE TIES



N.T.S.

Statement of evidence for this corner location is on back of this page.

I hereby certify that this document was researched and prepared by me or under my direct supervision and that I am a licensed Land Surveyor under the laws of the State of Minnesota.

Signature Kurt D. Brown

Date 12/29/2022 License No. 56488

Title:

☒ Land Surveyor ☐ Professional Engineer
☐ County Surveyor ☐ County Engineer

OFFICE OF THE COUNTY RECORDER

County of Murray

I hereby certify that this document was filed in the Co.

JAN 05 2023

Recorder's office at _____ M. on the _____ day of _____ A.D. 20

County Recorder Karen Brown

by _____, Deputy

DOCUMENT NO. _____

KYLE JOHNSON
Minnesota License No. 56488

Statement of Evidence:

Northwest Corner of Section 06, Township 107 North, Range 43 West, 5th Principal Meridian, Murray County, Minnesota.

1861- GLO set a post, mound of earth with trench and pits and charcoal

1901- Survey of Section 31 shows a distance of 2660 to the NQ of Section 6.

1936- Surveyors Record Book survey of section 33 notes a concrete stone and notes 3 ties.

UNKN- Survey in section 6 shows a distance from the NW to the NE of section 6. does not state what was found or set.

2007- Chris Moehrl, LS40853, filed a corner record stating he found a 8x8 marked stone and set a 3/8" rebar with cap over the top. Notes 4 ties.

2022- Westwood Professional Services found a 3/8" rebar with illegible cap 0.2' deep and 2 ties of previous record. and 1 tie of unknown origin. Distances agree with previous survey of Section 6.

Analysis of the recovered data, field evidence and survey measurements, indicates that the monument found is the correct perpetuation of this corner. For additional information concerning this corner please contact Westwood Professional Services.